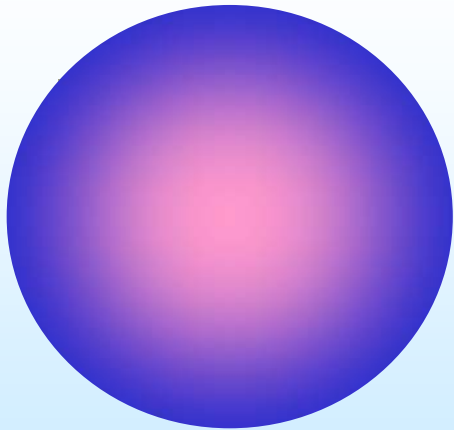
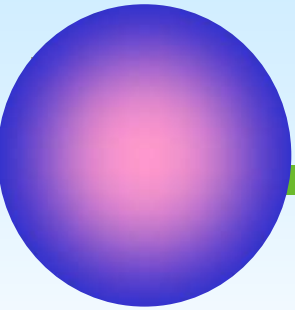


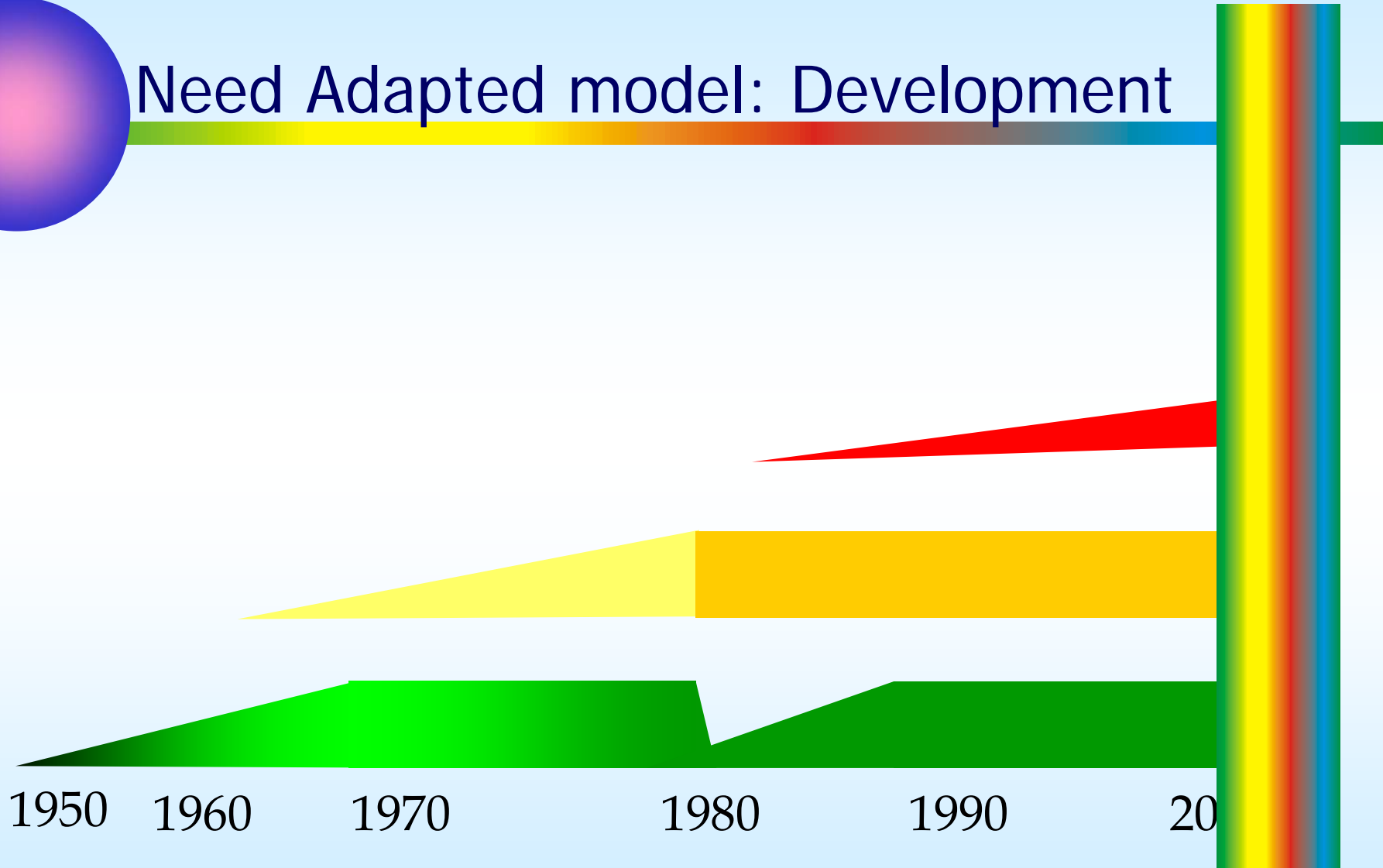
Need Adapted treatment The Role of Shared Understanding



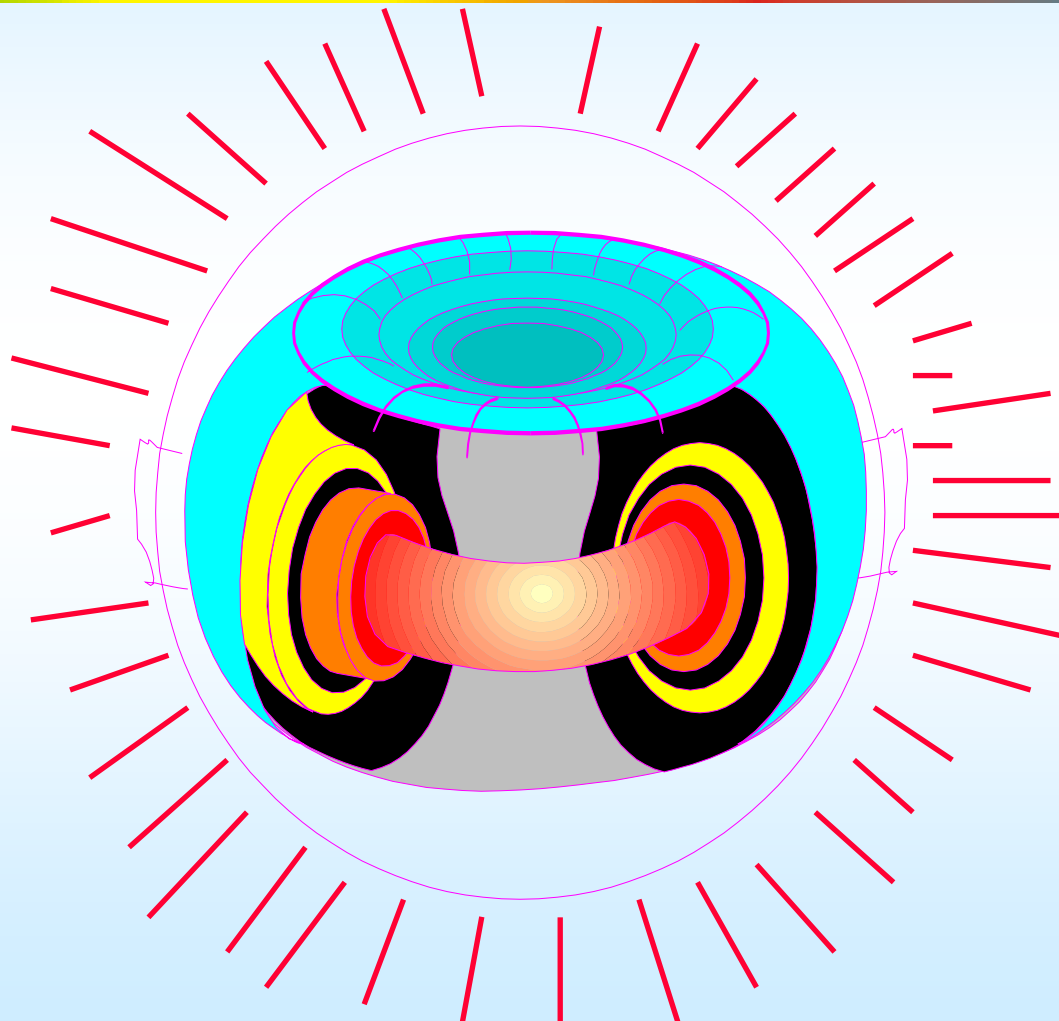
ISPS Denmark
20.4.2007
Klaus Lehtinen

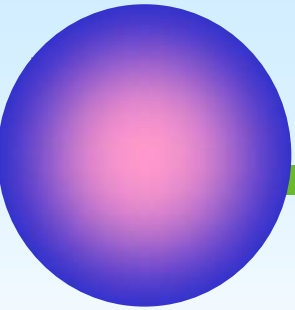


Need Adapted model: Development



Interaction maintains health

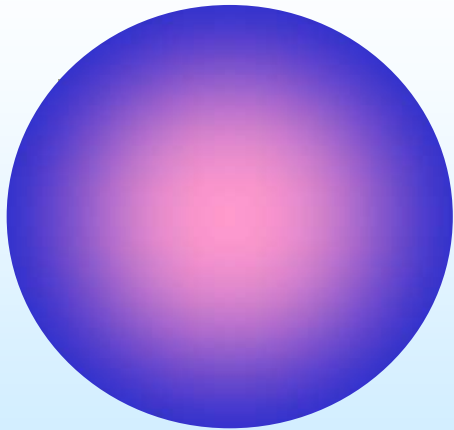




Interaction corrodes health



Humans look for causalities because of their need to live in a predictable environment. (Stern 1995)



The river of everyday life interaction

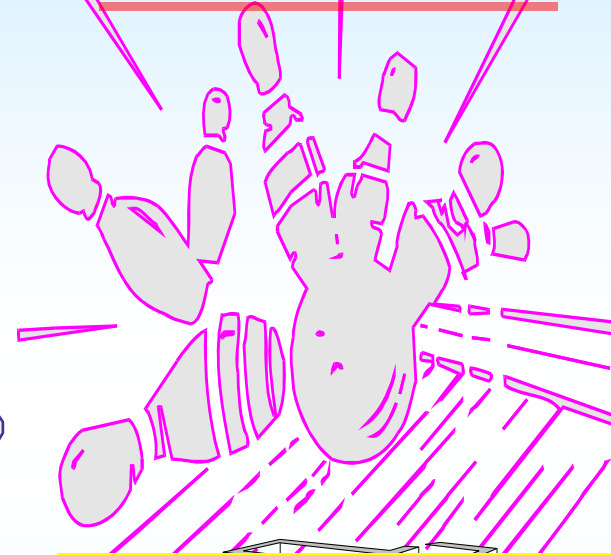
The World

Biology

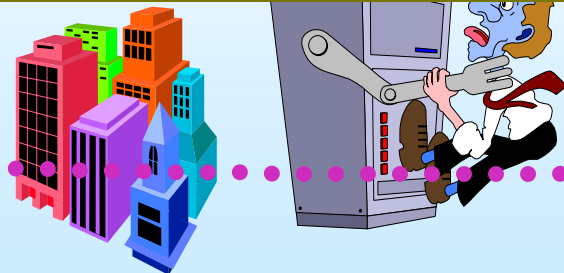


Psychodynamics

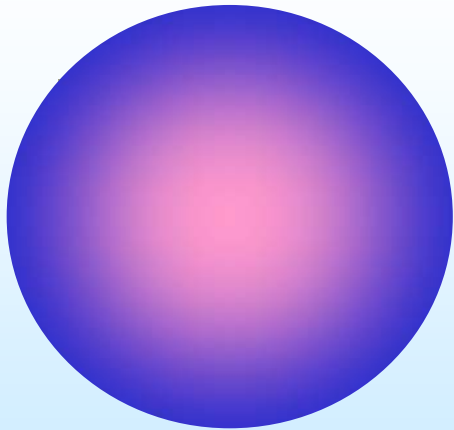
Interaction



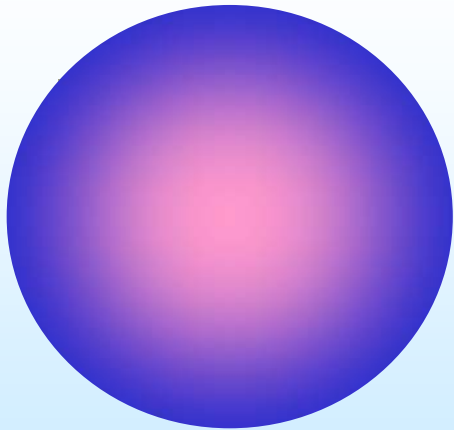
- Organisations
- Larger systems



Psychosis is a genetic illness



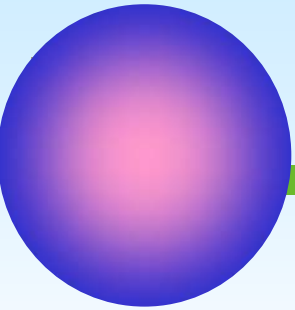
Bone fracture is a genetic illness



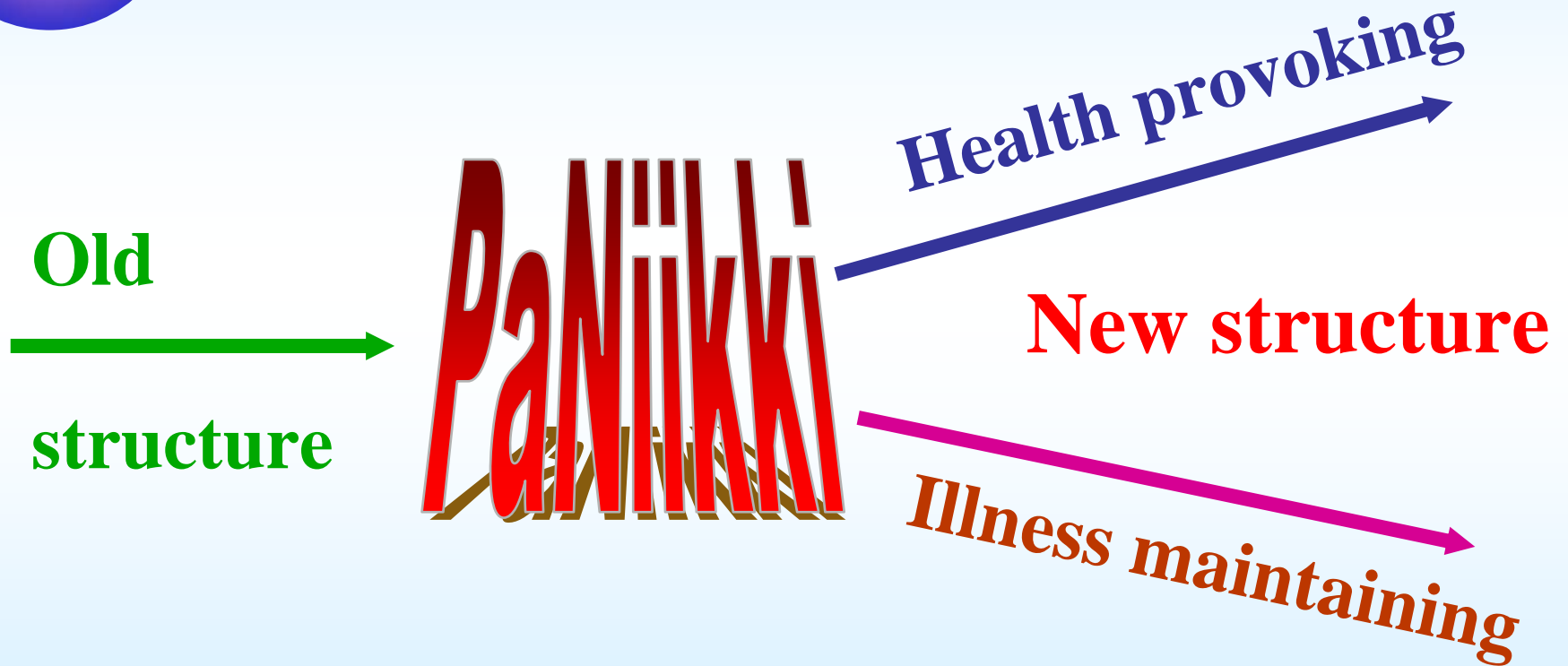


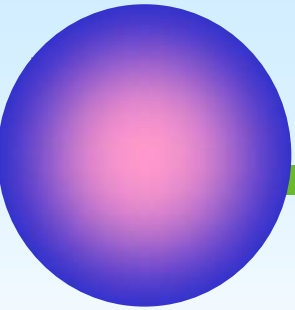
Psychosis is a genetic illness

- Something is permanently wrong
- How about the children
- Doctors do something universe
 - Diagnostics
 - Pills
 - Surgery
 - Hospitals

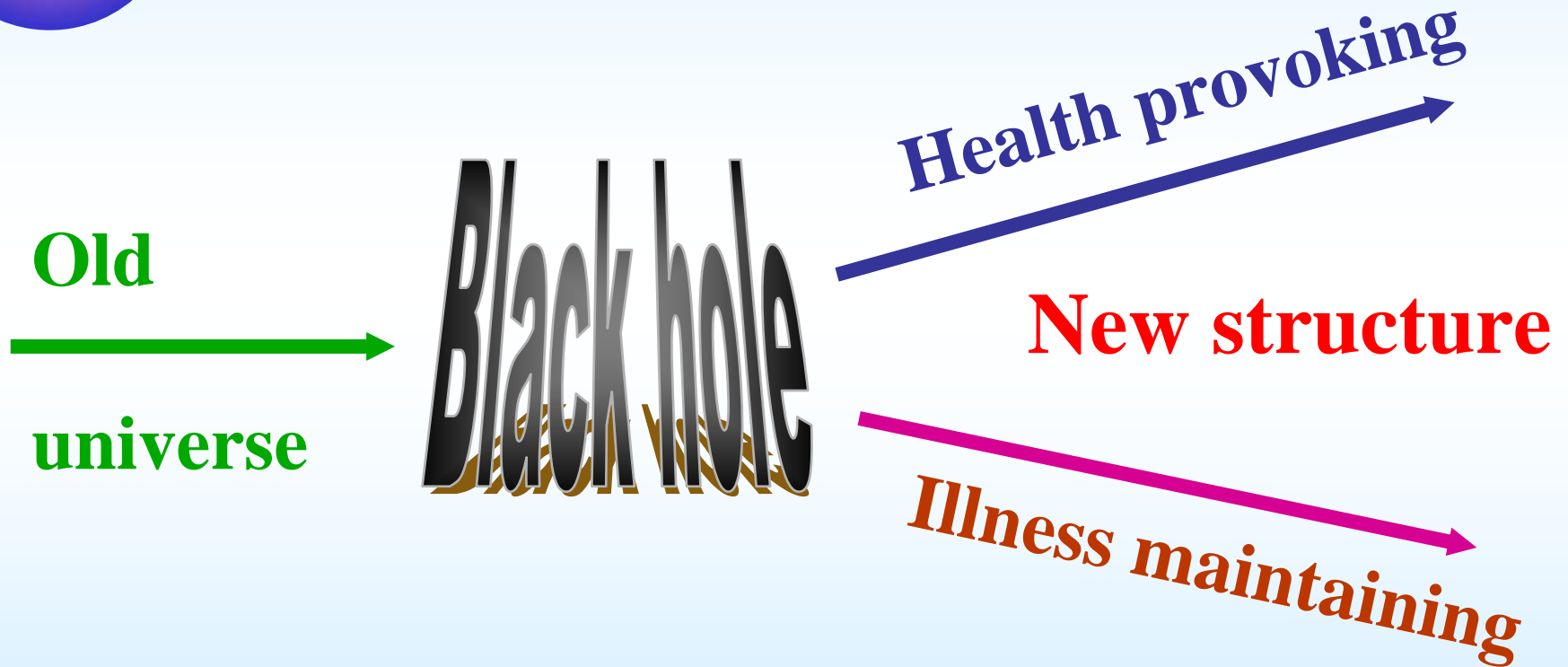


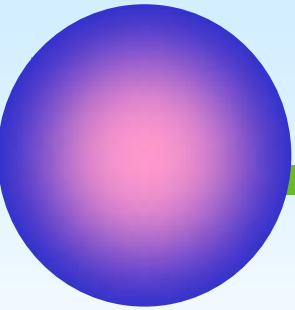
Psychosis and interaction





Psychosis and interaction





Psychosis and interaction



The river of everyday life interaction



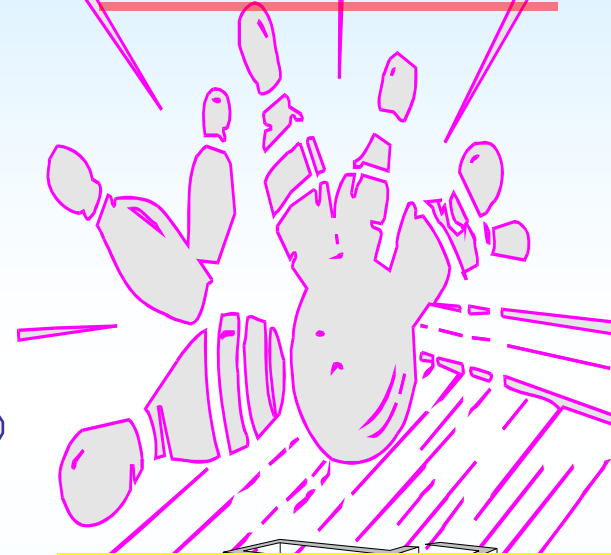
The creek for patients

Shared understanding

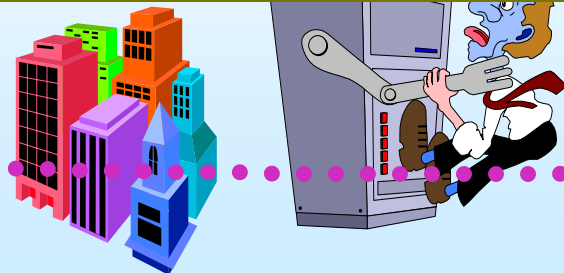
Biology



Interaction



- Organisations
- Larger systems





Everyday life principles

- Take treatment to the problems
 - Homes, workplaces
- Involve and the patient and his nearest
 - Encourage their understanding and interventions
 - Maximal self mastery, empowerment
- Avoid specialist services
 - Minimal but sufficient involvement
- Problems rather than diagnoses
 - Make everything understandable
 - Avoid ***disinformation***



Rec.

Orsanil 25 mg

D. tabl. no. C S.

” 1-2 pills in the evening. Helps tolerate the mixed feelings related to the final stages of the long psychotherapy”

